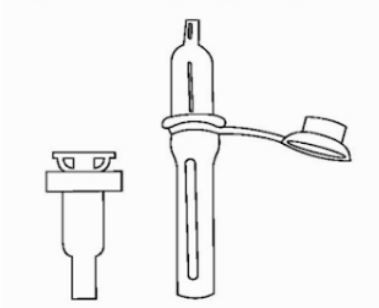


Illustrations for capillary sampling

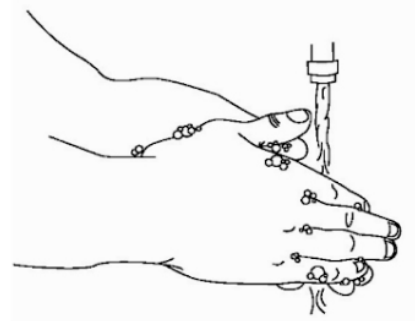
Figure 7.1 Capillary sampling



1. Lancet and collection tube.



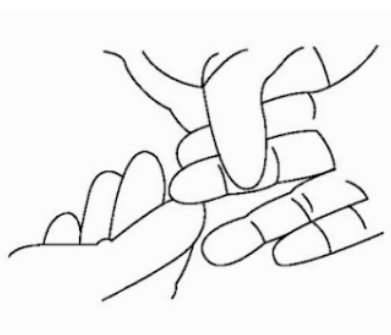
2. Assemble equipment and supplies.



3. Perform hand hygiene (if using soap and water, dry hands with single-use towels).



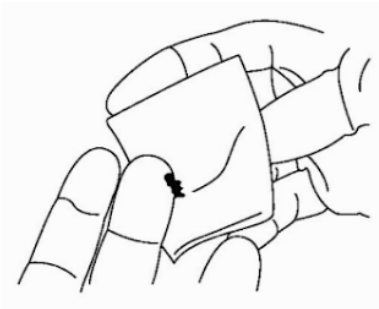
4. Put on well-fitting, non-sterile gloves.



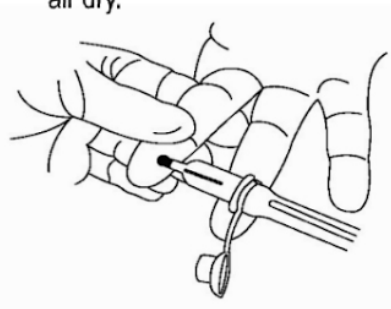
5. Select the site. Apply 70% isopropyl alcohol and allow to air dry.



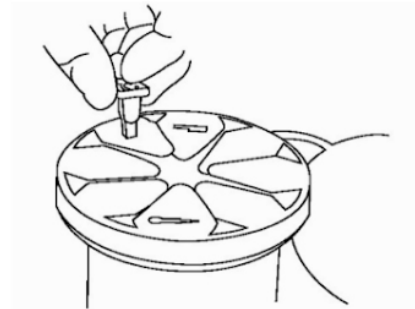
6. Puncture the skin.



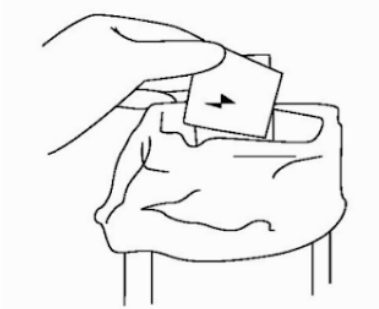
7. Wipe away the first drop of blood.



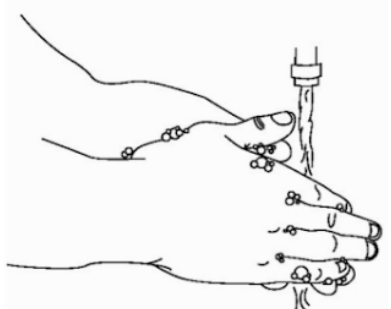
8. Avoid squeezing the finger too tightly.



9. Dispose of all sharps appropriately.



10. Dispose of waste materials appropriately.



11. Remove gloves and place in general waste. Perform hand hygiene (if using soap and water, dry hands with single-use towels).